

STATE ROUTE 67 / BRADLEY AVENUE INTERCHANGE

FACT SHEET

TOTAL COST

\$37 million

FY 2010

APPROPRIATION

REQUEST

\$25.8 million



The Project

The proposed project would replace the existing Bradley Avenue overcrossing at State Route 67 with a six-lane bridge that would accommodate all turning movements. The project also would provide additional capacity on the adjacent freeway ramps and provide pedestrian and bicycle facilities across the structure. In addition, the adjacent road widening of Bradley Avenue is included in this project.

The Need

Bradley Avenue is a four-lane major road in Pepper Drive-Bostonia, a community in the unincorporated County of San Diego. Bradley Avenue experiences high traffic volumes and significant queuing in peak hours at its intersection with State Route 67, a two-lane bridge, which was constructed in 1966 and does not meet today's minimum vertical clearance requirements.

Project Costs

Total costs for the project are estimated at \$37 million.

Project Status

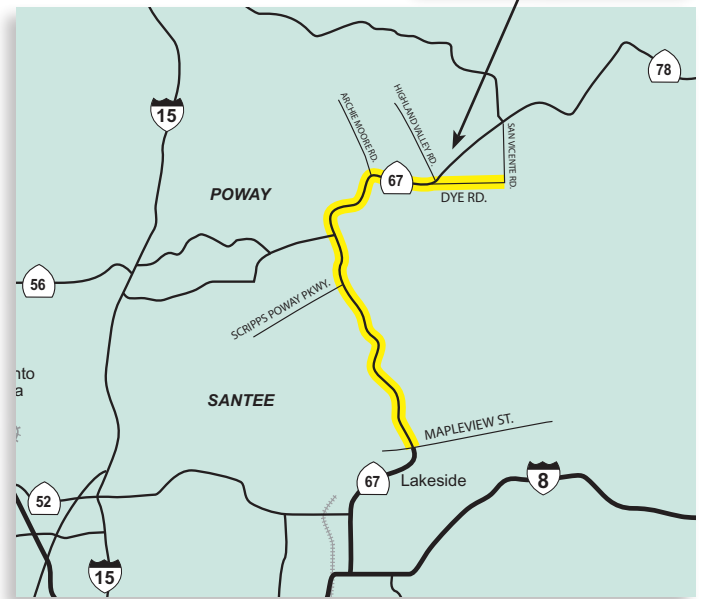
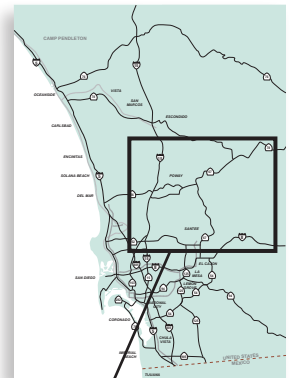
This project was initiated by Caltrans almost 20 years ago when it performed a feasibility study of the Bradley Avenue Interchange. Caltrans did not, however, initiate a project at that time. In 2000, the County of San Diego initiated a value analysis study of the interchange

and started a project to move forward with the environmental, design, and construction phases as funding allowed. Although the County is the project proponent, SANDAG has been partnering with Caltrans on project development.

Funding Status

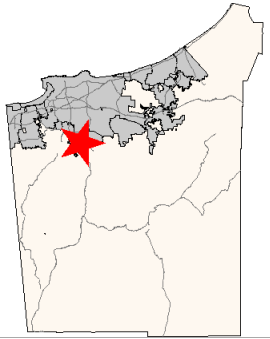
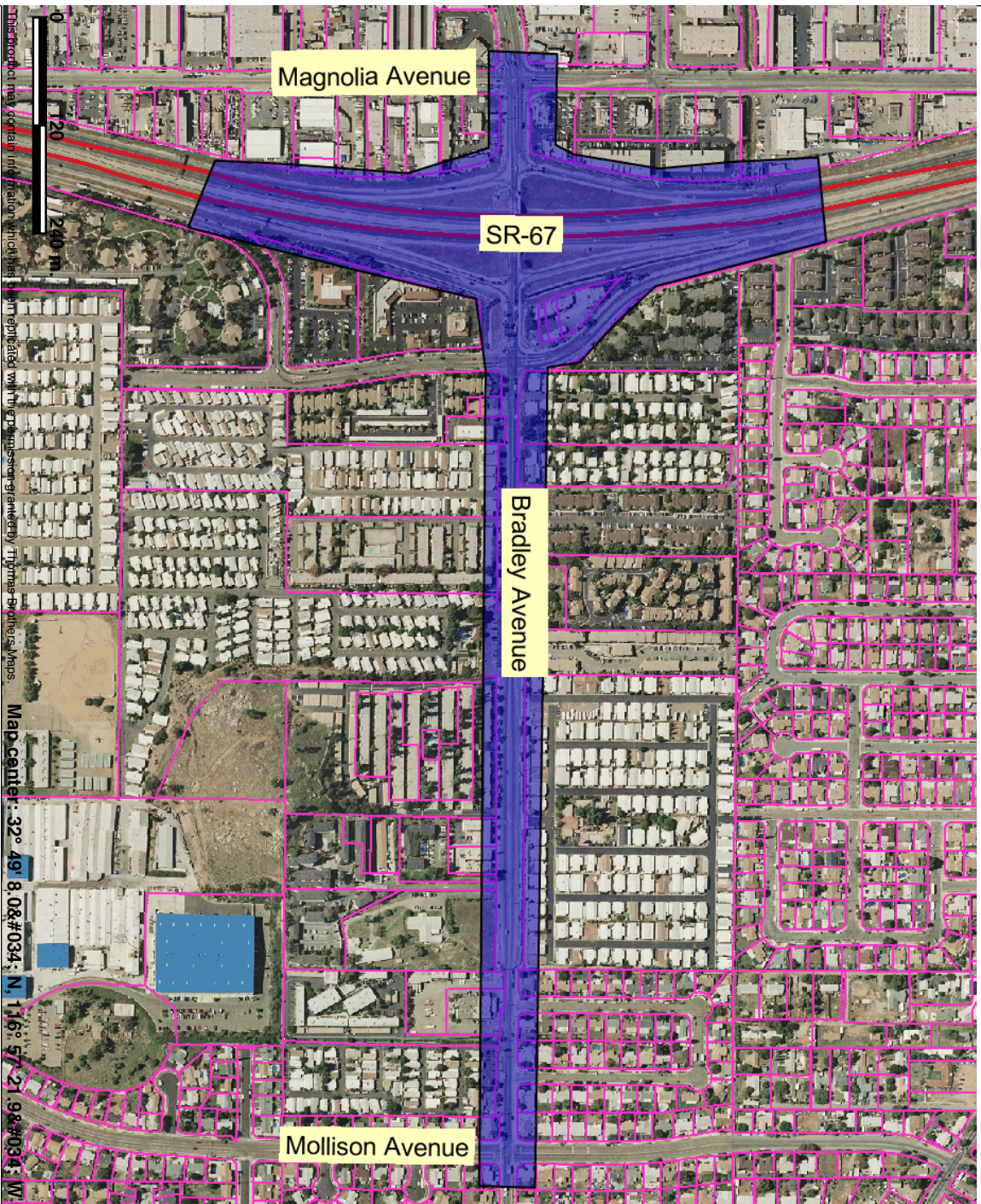
To date, Congress has appropriated \$500,000, and \$4 million was included in SAFETEA-LU.

(Continued on reverse)



401 B Street, Suite 800
San Diego, CA 92101
(619) 699-1900
Fax (619) 699-1905
www.sandag.org

Bradley Avenue Interchange - Project Location



Legend

- Parcels w/out labels
- Highways
- ⚡ Freeways
- Water Bodies
- Water Bodies
- 2005 Orthophoto South West
- 2005 Orthophoto South East
- 2005 Orthophoto North West
- 2005 Orthophoto North East



THIS MAP/DATA IS PROVIDED WITHOUT WARRANTY OF ANY KIND, EITHER EXPRESS OR IMPLIED, INCLUDING BUT NOT LIMITED TO THE IMPLIED WARRANTIES OF MERCHANTABILITY AND FITNESS FOR A PARTICULAR PURPOSE. This product may contain information from the SANDAG Regional Information System which cannot be reproduced without the written permission of SANDAG.

