

**“Federal and State
Airport Aid grant
obligations have done
more to preserve public
use airports in the
United States than any
other single factor.”**

Quoted from page 38, ACRP Report 44:

A Guidebook for the Preservation of Public-Use Airports*:

https://crp.trb.org/acrpwebresource2/wp-content/themes/acrp-child/documents/042/original/ACRP_44_A_Guidebook_for_the_Preservation_of_Public-Use_Airports.pdf

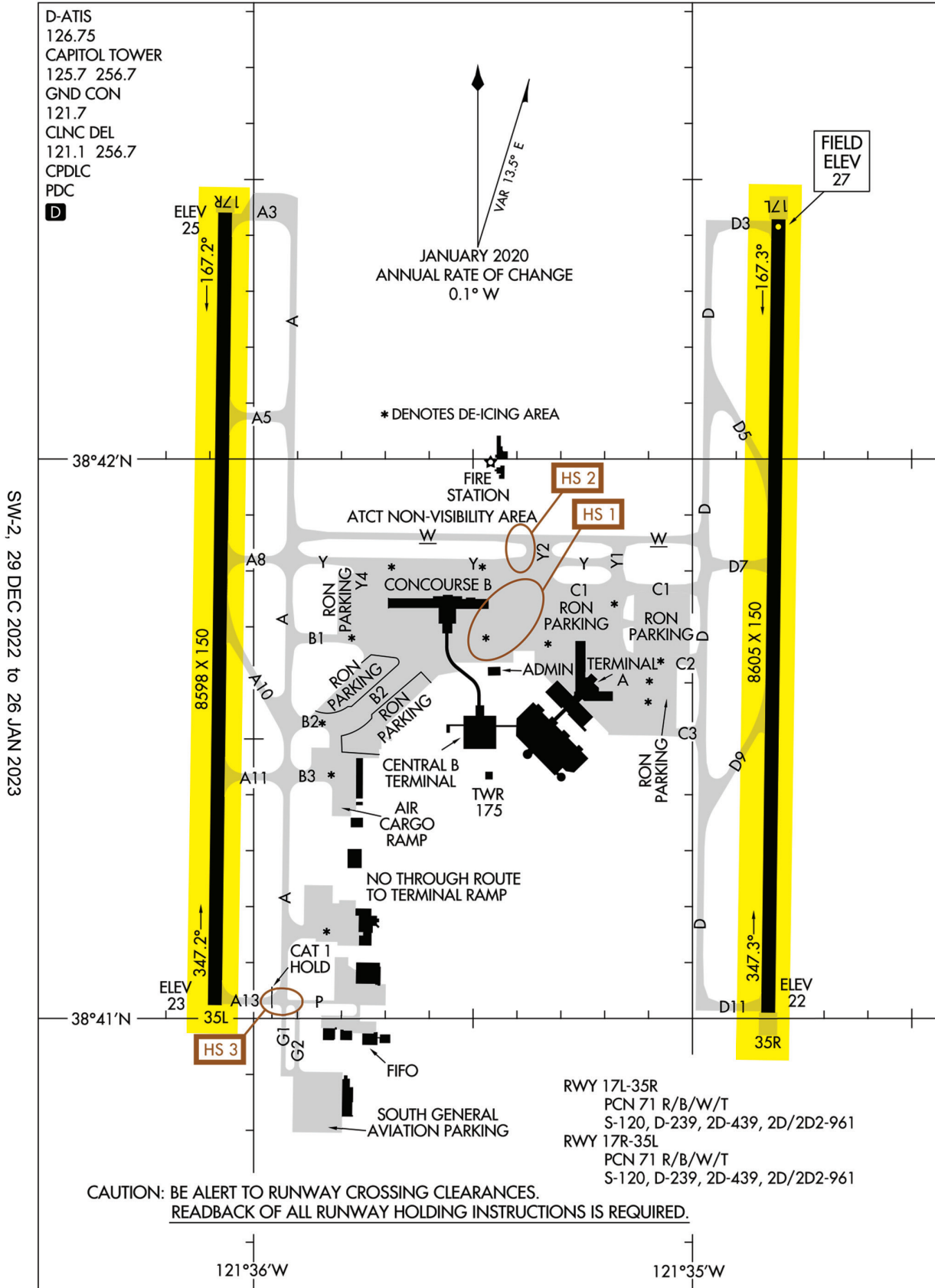
****The booklet was sponsored and paid for by the FAA “Preservation of Airports”***

SACRAMENTO INTERNATIONAL AIRPORT IS LOCATED 10.5 MILES NORTHWEST OF DOWNTOWN SACRAMENTO IN SACRAMENTO COUNTY, AND COVERS 6,000 ACRES.

22195
AIRPORT DIAGRAM

AL-5490 (FAA)

SACRAMENTO INTL (SMF)
SACRAMENTO, CALIFORNIA



SW-2, 29 DEC 2022 to 26 JAN 2023

SW-2, 29 DEC 2022 to 26 JAN 2023

AIRPORT DIAGRAM
22195

SACRAMENTO, CALIFORNIA
SACRAMENTO INTL (SMF)