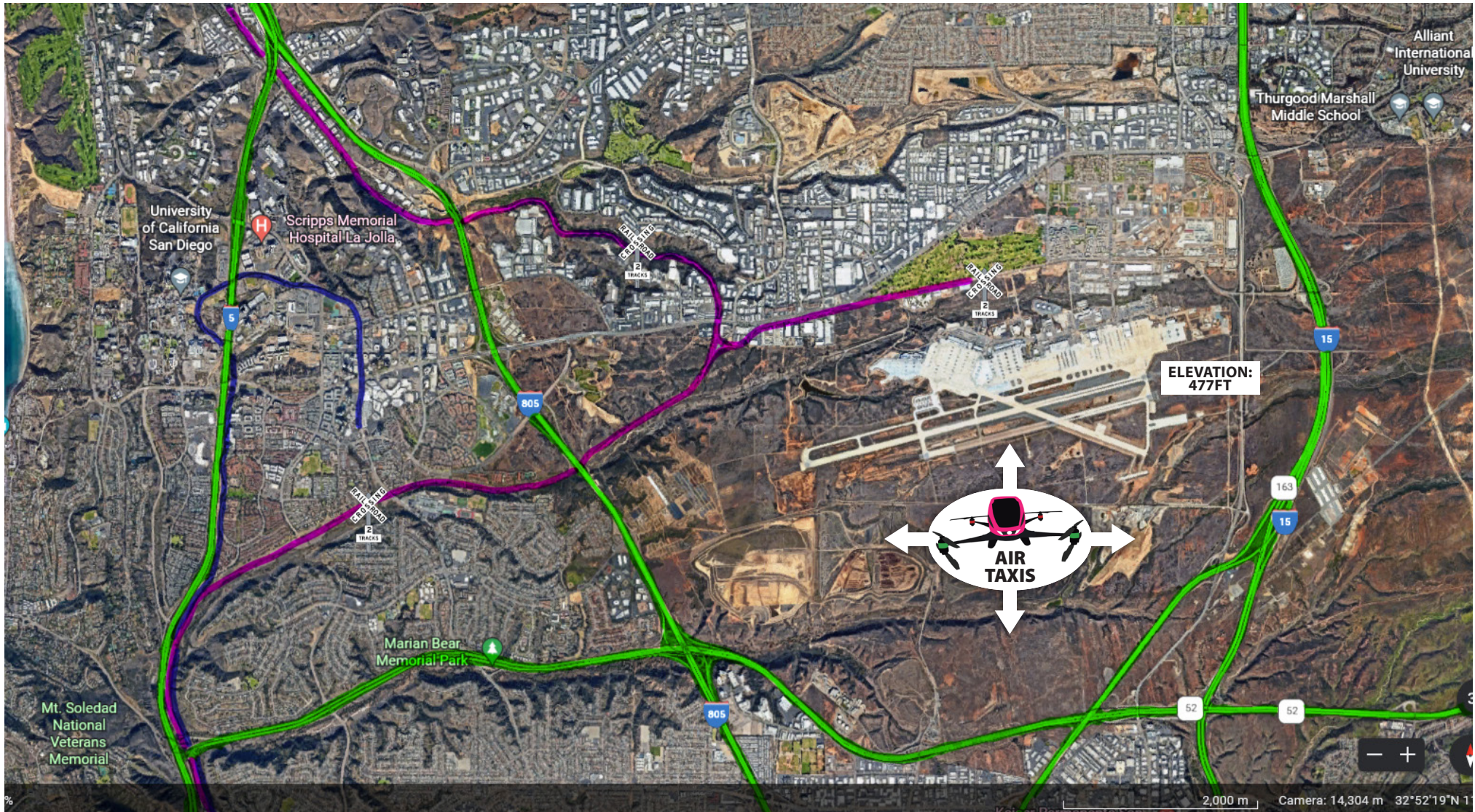


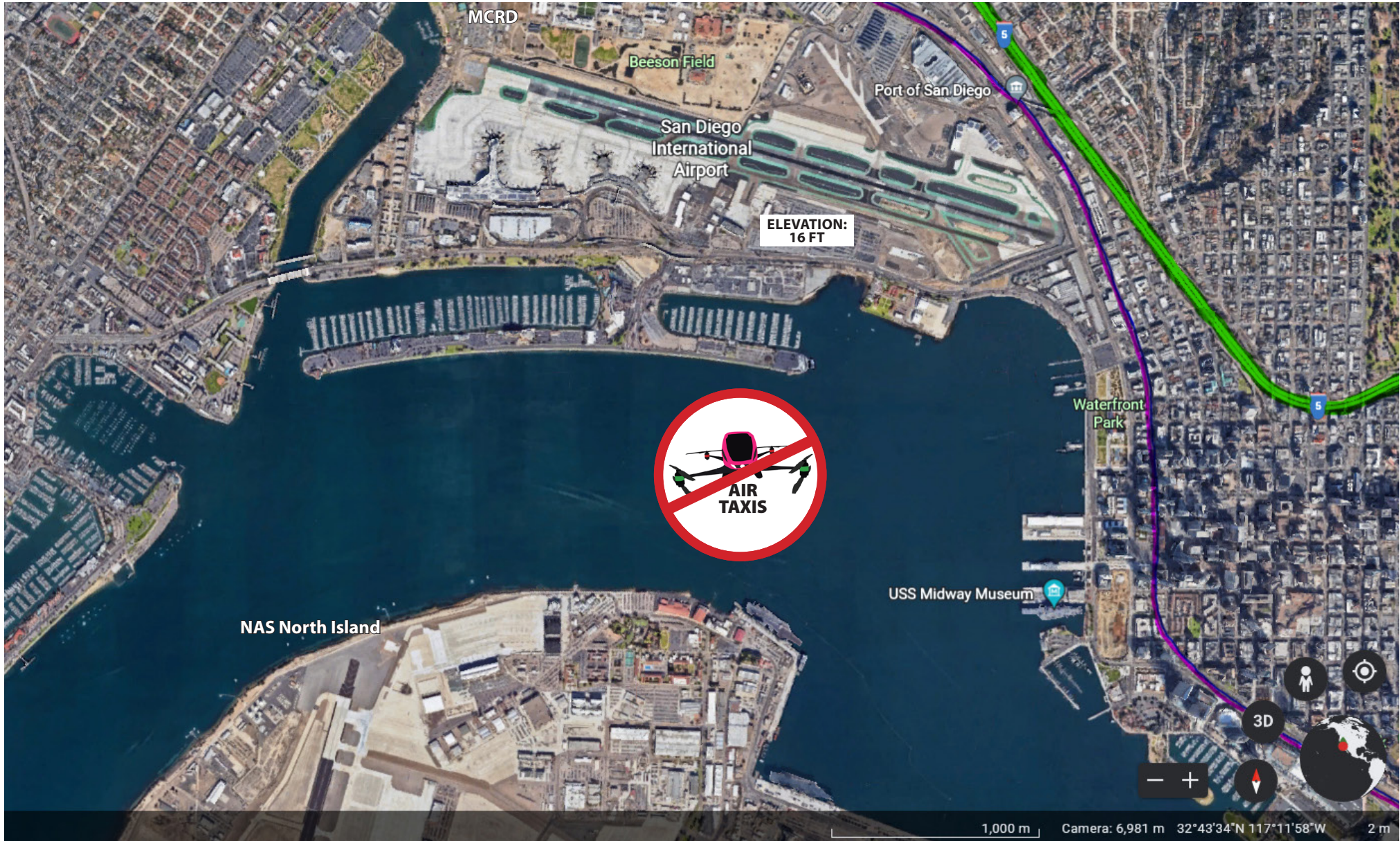
RAILROAD/FREEWAY ACCESS TO "WORLD AIRPORT" AT MCAS (23,000+ ACRES)



12 LANE INTERSTATE 15 BORDERS MCAS ON THE EAST
8 LANE HWY 52 BORDERS MCAS ON THE SOUTH
8 LANE INTERSTATE 805 BORDERS MCAS TO THE WEST

NOTE: COLOR LINE INDICATES DUAL TRAIN TRACKS ■■■ NOTE: COLOR LINE INDICATES TROLLEY TRACKS ■■■ NOTE: COLOR LINE INDICATES FREEWAYS ■■■

LINDBERGH FIELD 1 RUNWAY (633 ACRES)



8 LANE INTERSTATE 5 - EAST OF LINDBERGH

NOTE: COLOR LINE INDICATES TRAIN TRACKS

NOTE: COLOR LINE INDICATES TROLLEY TRACKS

NOTE: COLOR LINE INDICATES FREEWAYS

GILLESPIE FIELD - DOUBLE BREASTING COUNTY AIRPORT



**THE PRACTICE OF EMPLOYING NONUNION WORKERS,
ESPECIALLY IN A SEPARATE DIVISION, TO SUPPLEMENT
THE WORK OF HIGHER-PAID UNION WORKERS**