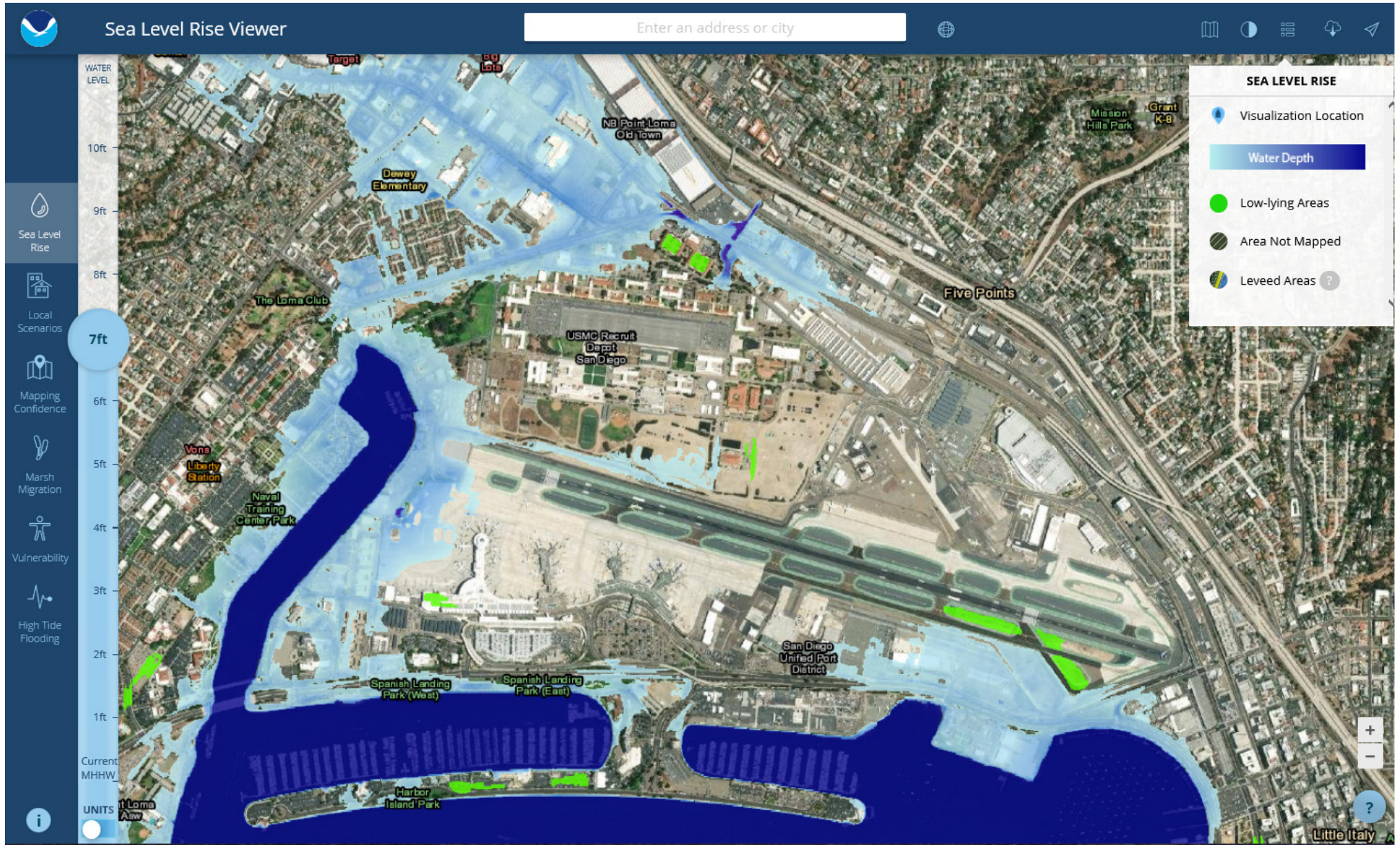
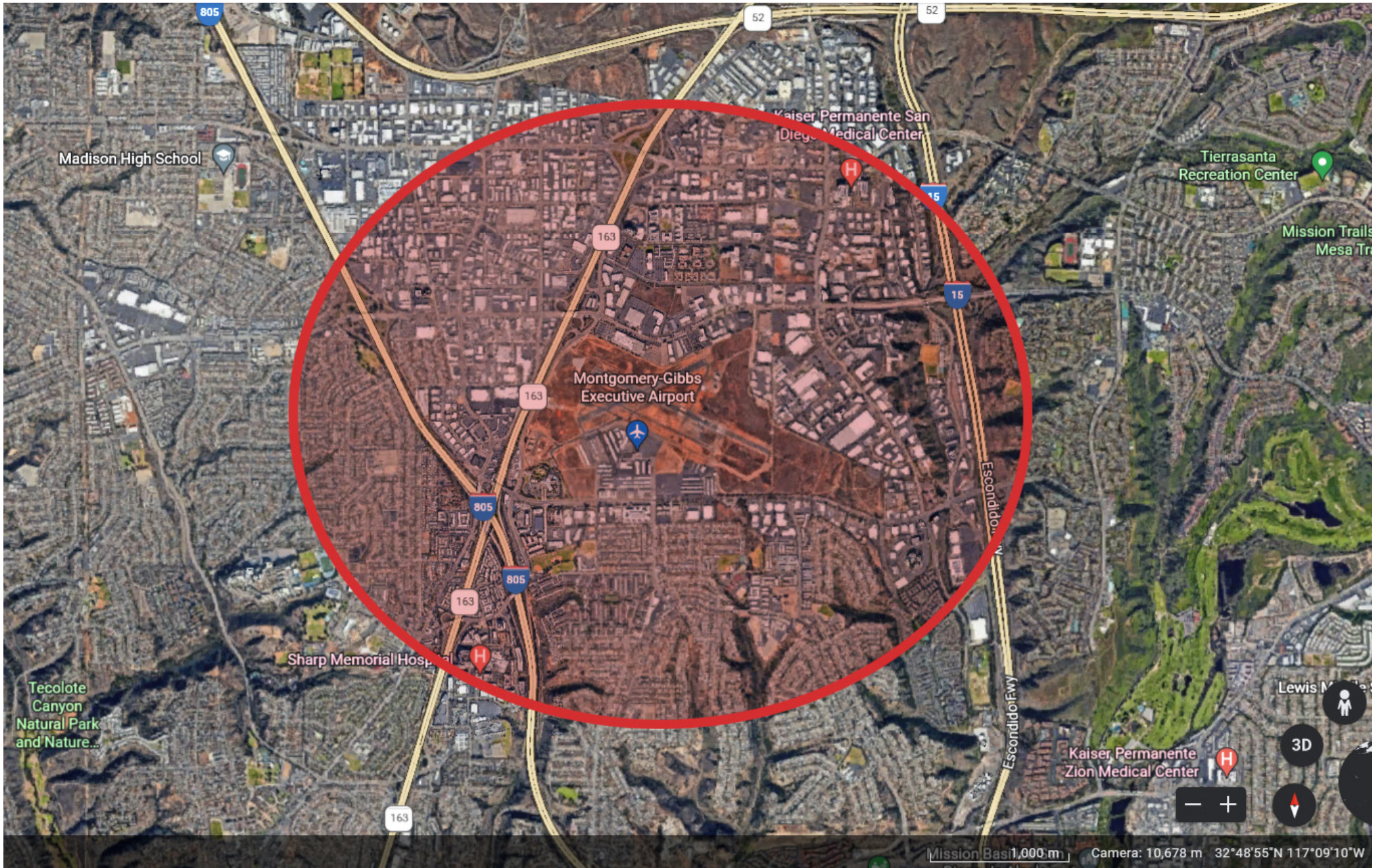


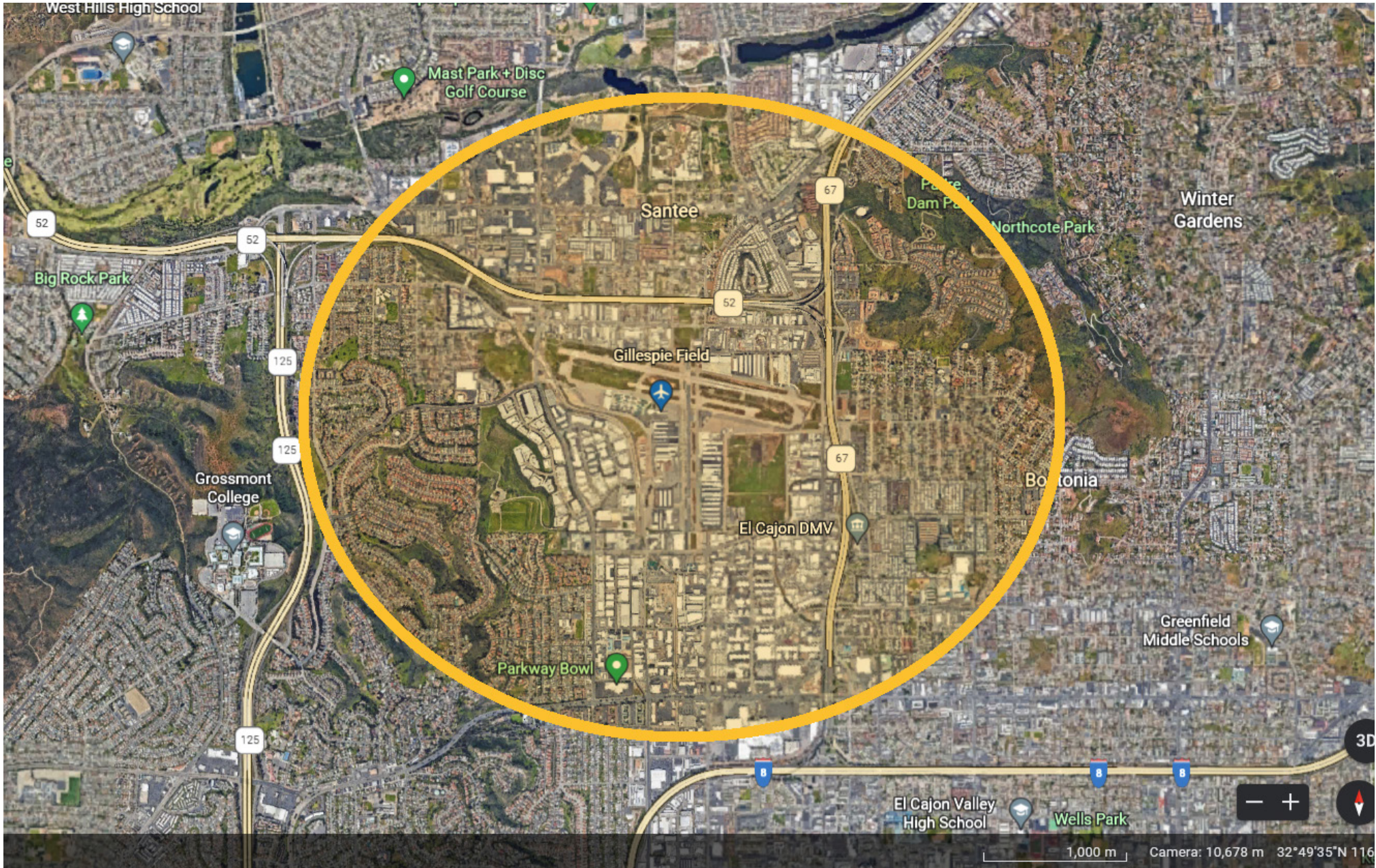
ROSE CANYON FAULT LINE RUNS THROUGH AND ALONG LINDBERGH FIELD



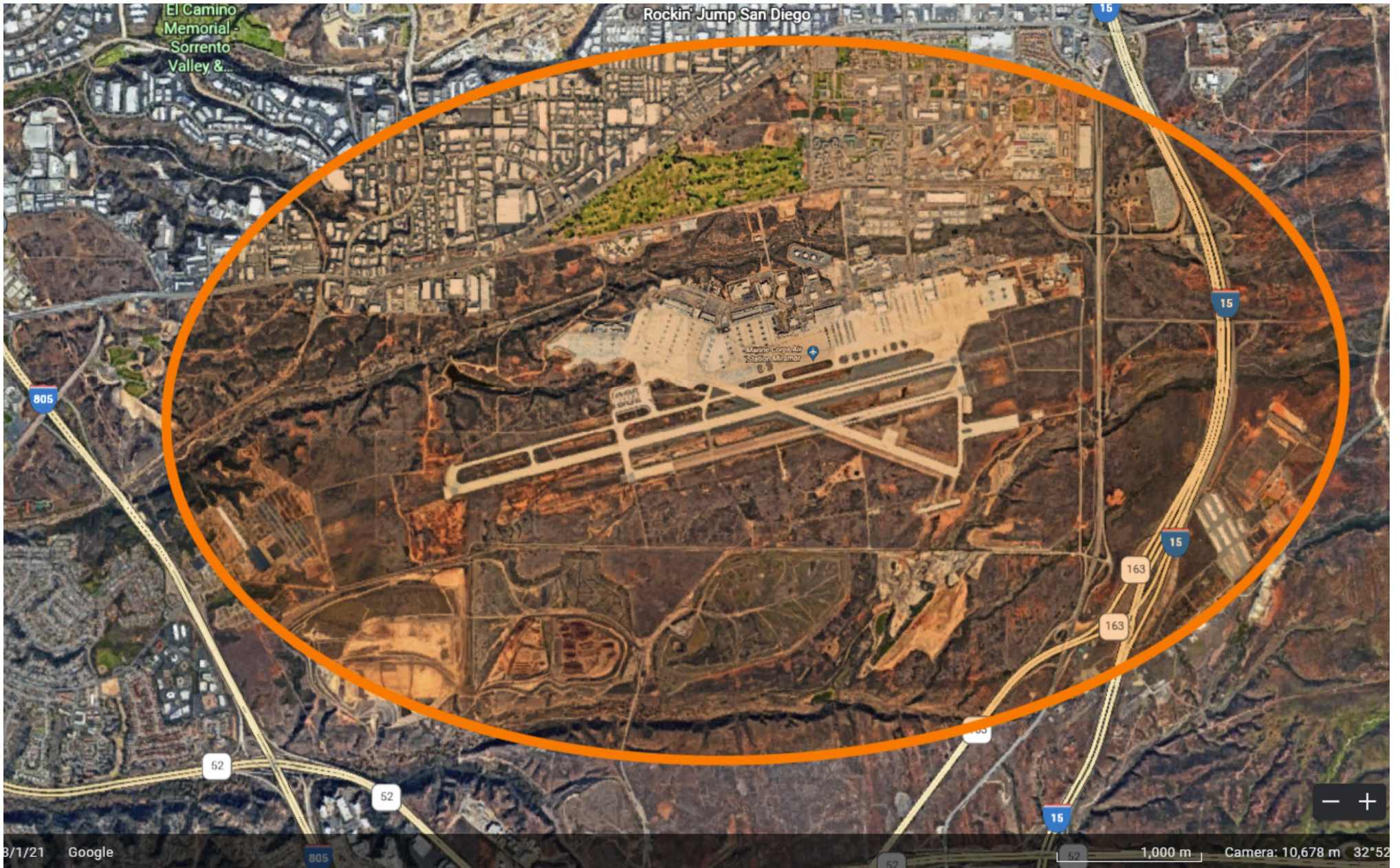
**LINDBERGH FIELD - SEA LEVEL RISE FLOODING AT 7 FEET
ELEVATION: -16' • 1 RUNWAY
LONGEST RUNWAY: 9,000' x 200' with EMAS**



MONTGOMERY FIELD • EST. in 1947 • 375 ACRES
APPROXIMATE DAILY OPERATIONS: 250
3 RUNWAYS • LONGEST RUNWAY: 4,600' x 150'



GILLESPIE FIELD • EST. 1956 • 340 ACRES
APPROXIMATE DAILY OPERATIONS: 200
3 RUNWAYS • LONGEST RUNWAY 5,350' x 100'



**MCAS MIRAMAR • EST. 1947/1997 • 23,000 ACRES
APPROXIMATE DAILY OPERATIONS: 30 • HELIPORT
2 RUNWAYS • LONGEST RUNWAY 12,000' X 200'**