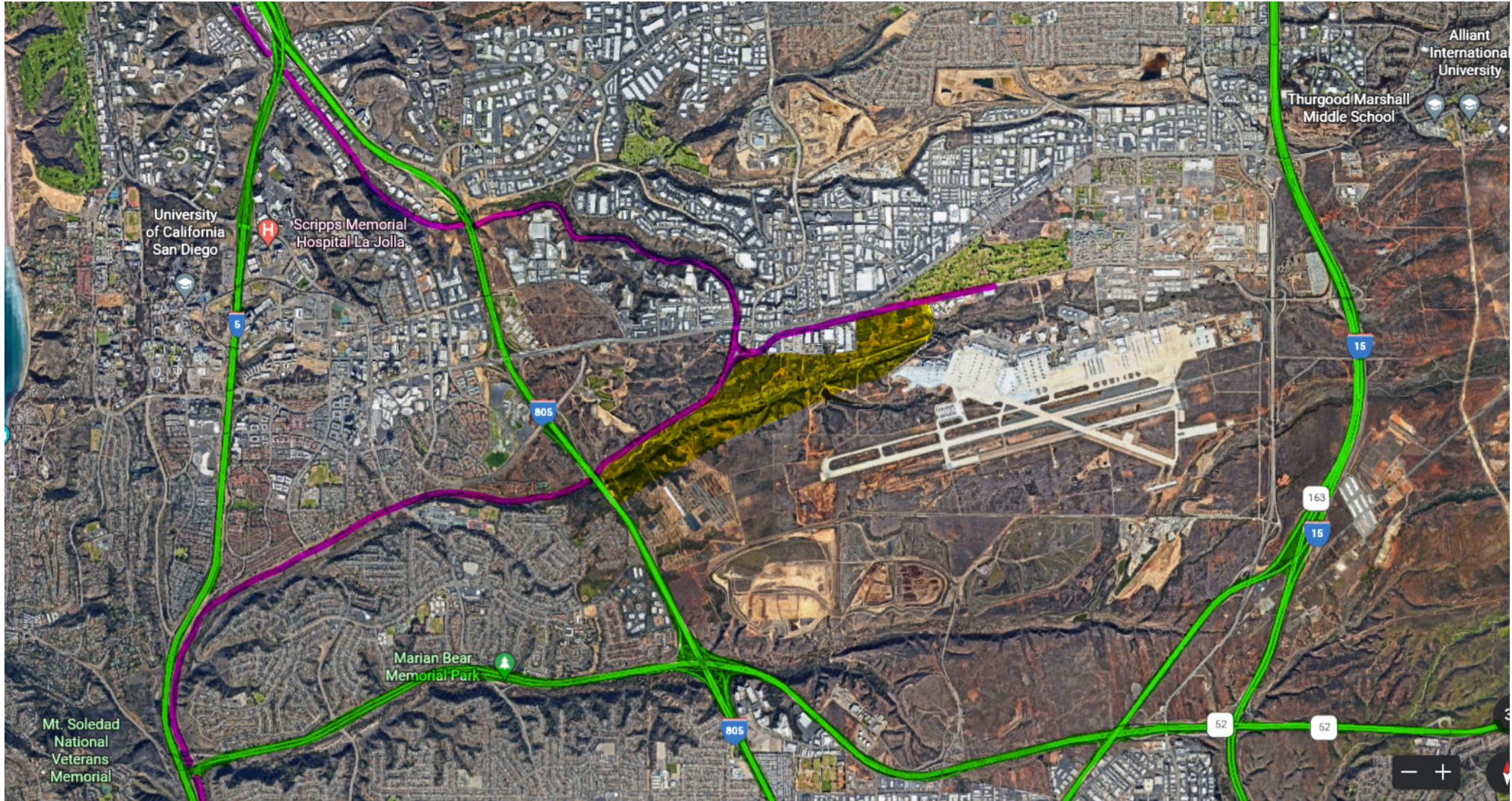


# RAILROAD/FREEWAY ACCESS TO “WORLD AIRPORT” AT MCAS



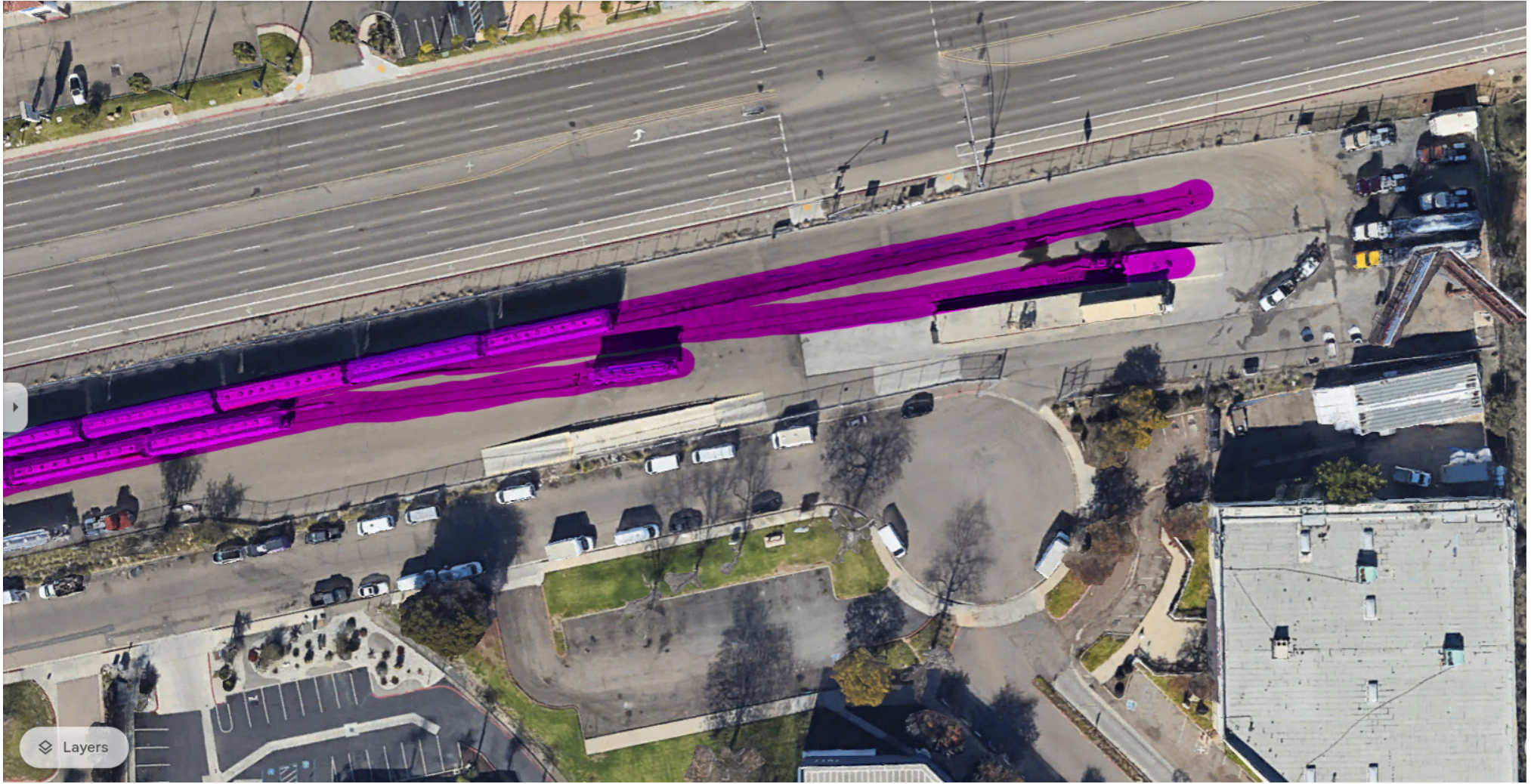
**12 LANE INTERSTATE 15 BORDERS MCAS ON THE EAST**  
**8 LANE HWY 52 BORDERS MCAS ON THE SOUTH**  
**8 LANE INTERSTATE 805 BORDERS MCAS TO THE WEST**

NOTE: COLOR LINE INDICATES PARALLEL TRAIN TRACKS

NOTE: COLOR LINE INDICATES FREEWAYS



NOTE: COLOR LINE INDICATES PARALLEL TRAIN TRACKS



**NOTE: COLOR LINE INDICATES PARALLEL TRAIN TRACKS**

# **C.A.G.E. L.F.A.**

**CITIZENS AGAINST GILLESPIE'S EXPANSION  
& LOW FLYING AIRCRAFT**

• SAFETY • SECURITY • NOISE • ENVIRONMENT • FUNDING •

**www.cagelfa.com • info@cagelfa.com**

**619-760-0576**

 [facebook.com/CAGELFA](https://facebook.com/CAGELFA) •  [@CAGELFA51](https://youtube.com/@CAGELFA51)

Established May 1, 2013