



OPINION

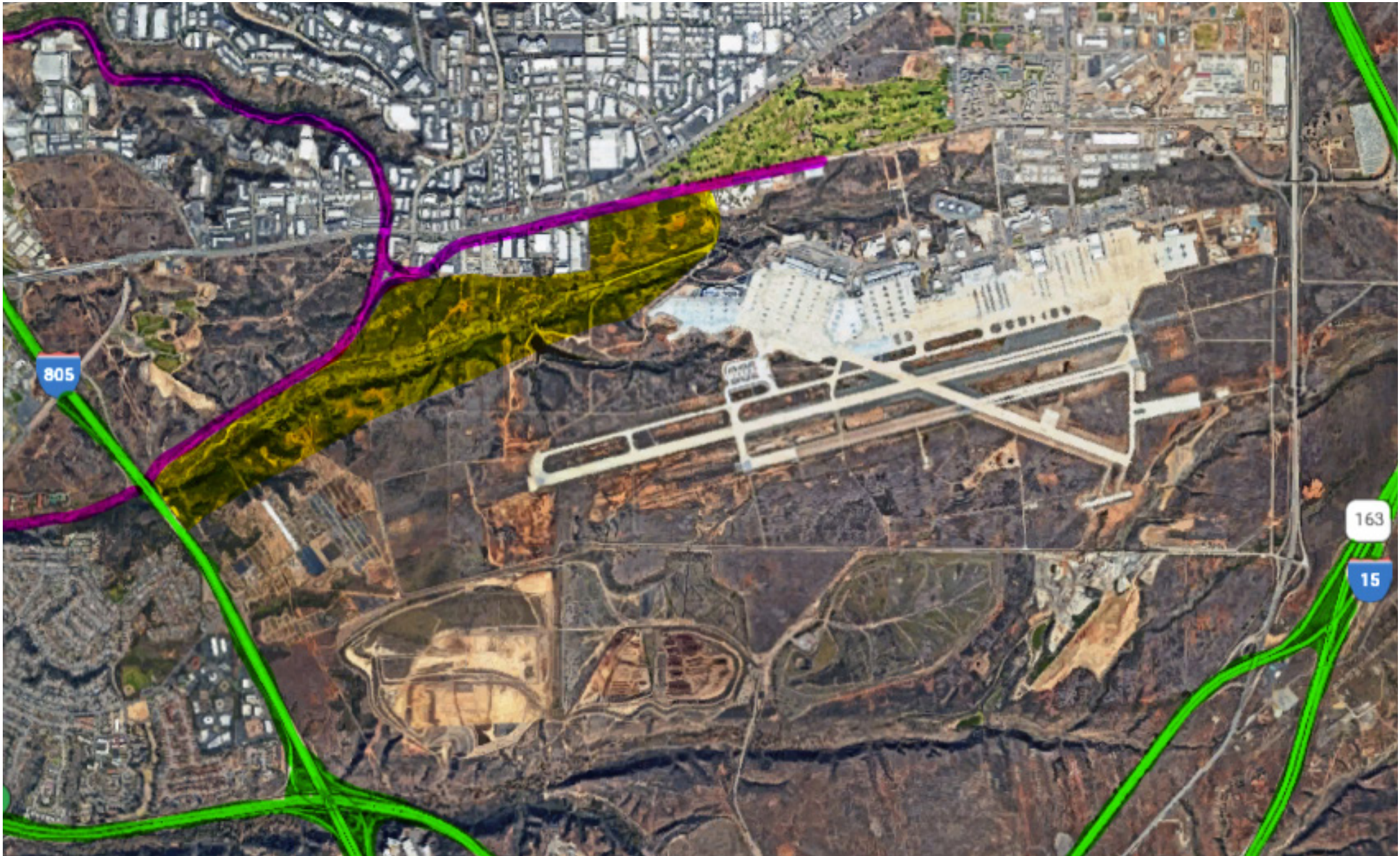
It's time to ditch San Diego's airport rail connection fantasy

Regional planners should significantly bolster existing bus, shuttle service to the airport. That's not as sexy as trolleys or people movers, but those multibillion-dollar options are at best years away — and may never materialize



SOURCE: <https://www.sandiegouniontribune.com/2024/05/01/its-time-to-ditch-san-diegos-airport-rail-connection-fantasy/?clearUserState=true>

RAILROAD/FREEWAY ACCESS TO "WORLD AIRPORT" AT MCAS

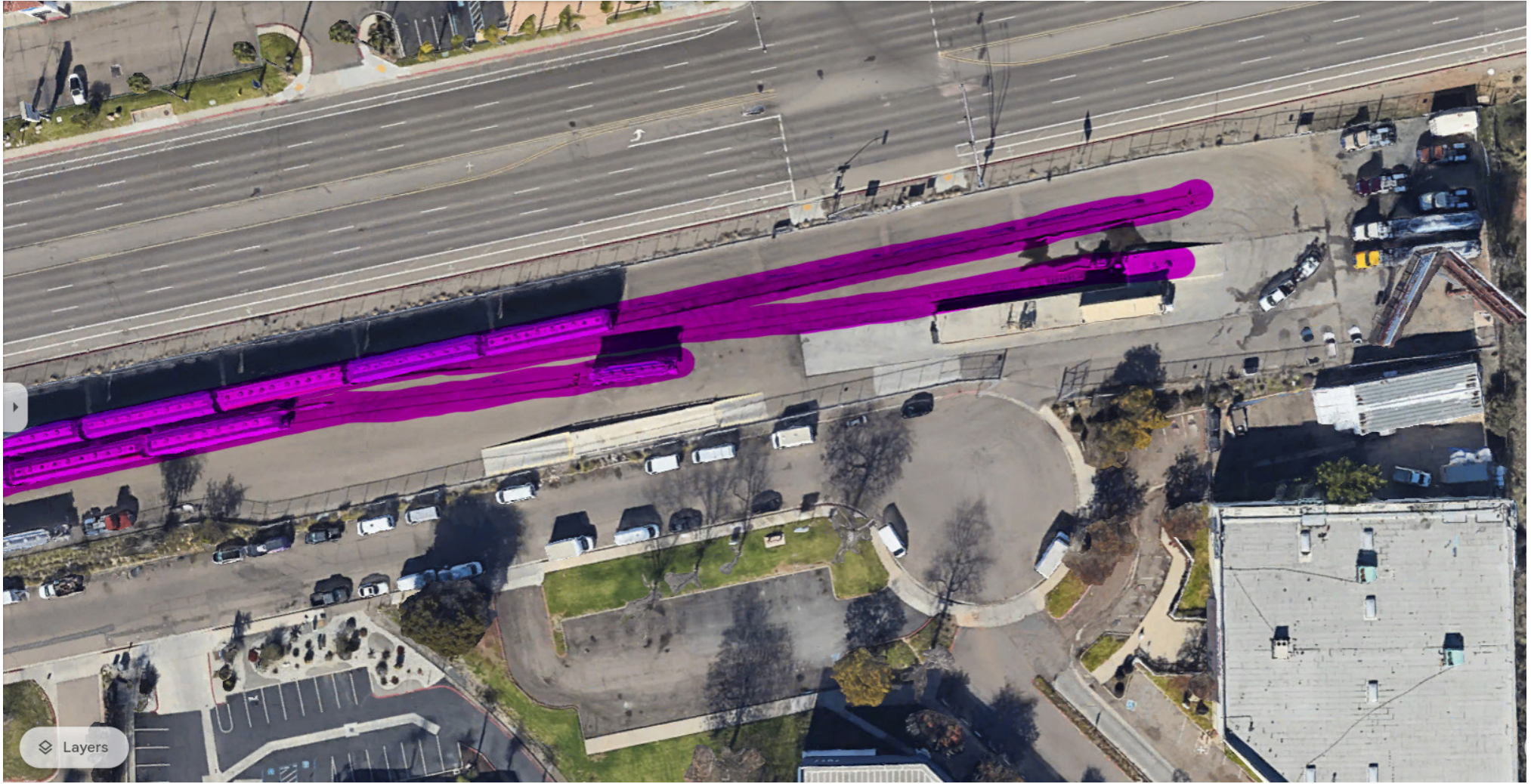


NOTE: COLOR LINE INDICATES PARALLEL TRAIN TRACKS

NOTE: COLOR LINE INDICATES FREEWAYS



NOTE: COLOR LINE INDICATES PARALLEL TRAIN TRACKS



NOTE: COLOR LINE INDICATES PARALLEL TRAIN TRACKS