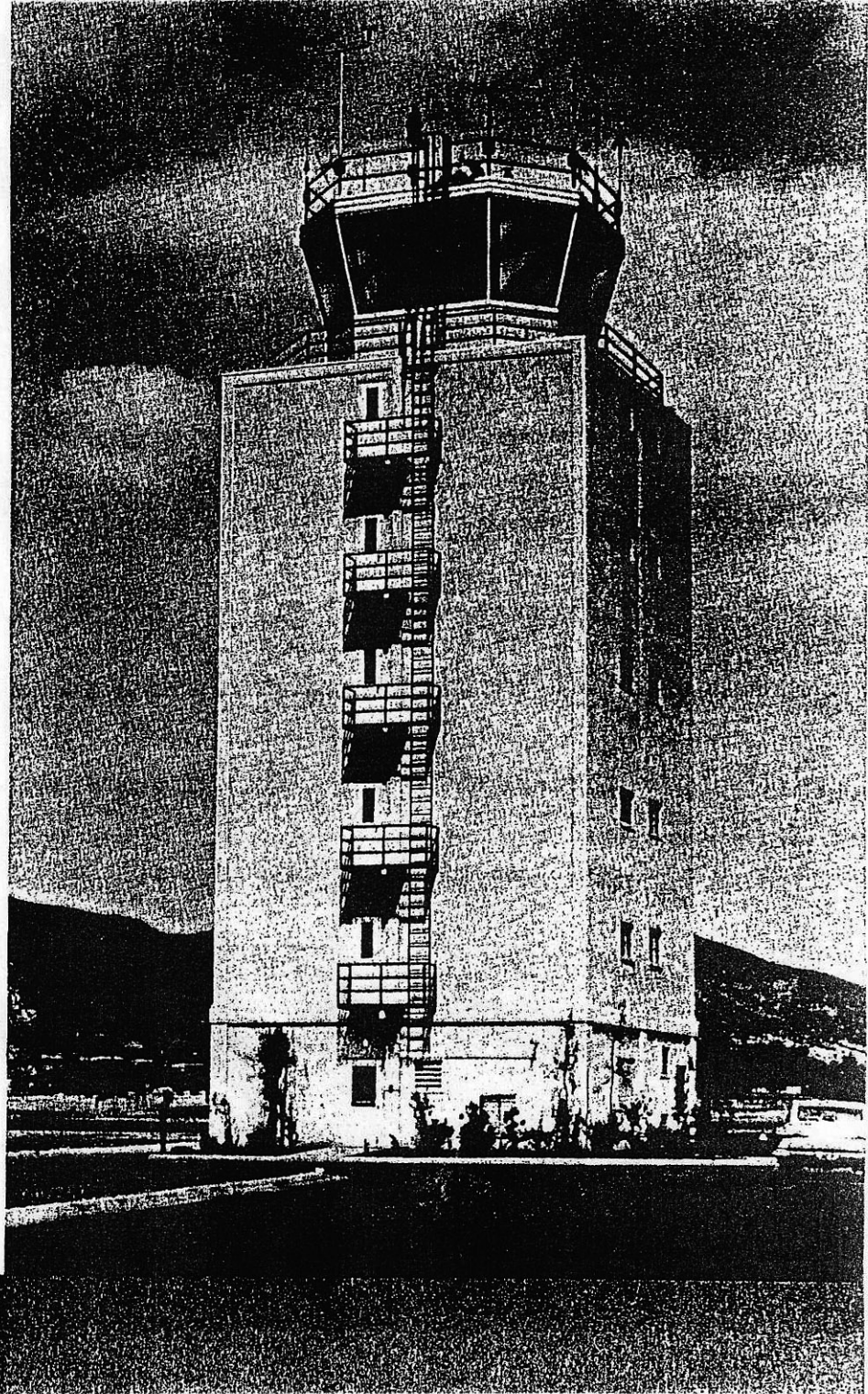


JUNE 9, 1962

GILLESPIE  
FIELD  
CONTROL  
TOWER  
AND  
TAXIWAY



---

**BOARD OF SUPERVISORS**

DE GRAFF AUSTIN, Chairman ..... Fourth District  
FRANK A. GIBSON ..... First District  
DAVID W. BIRD ..... Second District  
ROBERT C. DENT ..... Third District  
ROBERT C. COZENS ..... Fifth District  
T. M. HEGGLAND ..... Chief Administrative Officer

---

**COUNTY AIRPORT COMMISSION**

HARLAN TORKEKELSON, Chairman                      ROBERT C. GORDON  
LEE A. GARNER, Secretary                              T. B. SMILEY  
MARTIN E. FRAZIER

---

**DEPARTMENT OF PUBLIC WORKS**

JEAN L. VINCENZ ..... Director  
CHARLES S. GOODE ..... Assistant Director  
W. A. BARNEY ..... Chief, Engineering Division  
C.-J. RUST ..... Chief, Aviation & Property Management  
H. G. CULVER ..... Airport Manager, Gillespie Field

---

**CONTRACTORS**

TOWER ..... Riha Construction Company  
TAXIWAY ..... V. R. Dennis Construction Company

---

**TOWER OPERATIONS**

JAMES BURKHARDT ..... Tower Chief

---

**ACKNOWLEDGMENTS**

The Federal Government contributed 54% of the cost of these facilities through the Federal Airport Air Program. Necessary Congressional appropriations were made possible through the efforts of:

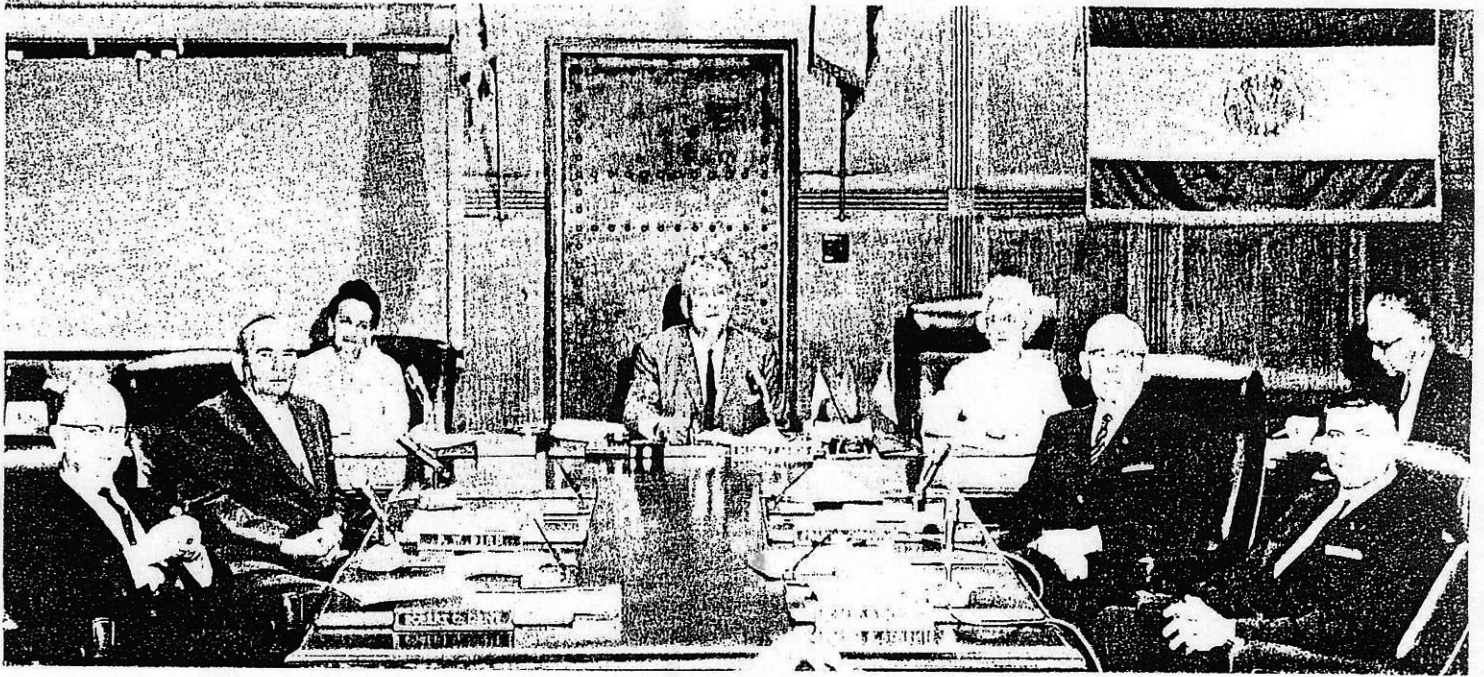
SENATOR THOMAS H. KUCHEL  
SENATOR CLAIR ENGLE  
REPRESENTATIVE JAMES B. UTT  
REPRESENTATIVE BOB WILSON

The Federal Aviation Agency through Joseph H. Tippetts, Ass't Administrator; Charles J. Winger, Chief of Airports; A. E. Horning, Chief, Aviation Facilities Division; L. Ponton de Arce, Chief, Air Traffic Division; and K. K. Kellner, District Airport Engineer, has supplied the technical criteria and Federal Airport Aid.

Special recognition is given to the Joint Aviation and Airport Committee of El Cajon, La Mesa, Santee and Lakeside Chambers of Commerce, consisting of:

CHARLES E. CORDELL, Chairman                      WALLACE DUNCAN  
CHARLES V. FERREE                                      THOMAS PARKS  
HARRY G. CULVER                                        RAY SHERER  
JAMES SNAPP, JR.                                        CLAR TIETSOR

Not listed elsewhere in this program, but most certainly deserving of a great share of the credit for these improvements, are untold numbers of dedicated county employees.



**SAN DIEGO COUNTY BOARD OF SUPERVISORS** — Foreground (*left to right*): Robert C. Dent, Third District; David W. Bird, Second District; Frank A. Gibson, First District and Robert C. Cozens, Fifth District.

*Back row*: Mrs. Porter Cremans, Assistant Clerk to the Board; De Graff Austin, Fourth District, Chairman of the Board; Mrs. Amelia Dean, Deputy Clerk and T. M. Hegglund, Chief Administrative Officer.

**SAN DIEGO COUNTY AIRPORT COMMISSION**



Martin E. Frazier



Lee A. Garner  
Secretary



Robert C. Gordon



Harlan Torkelson  
Chairman



Thomas B. Smiley

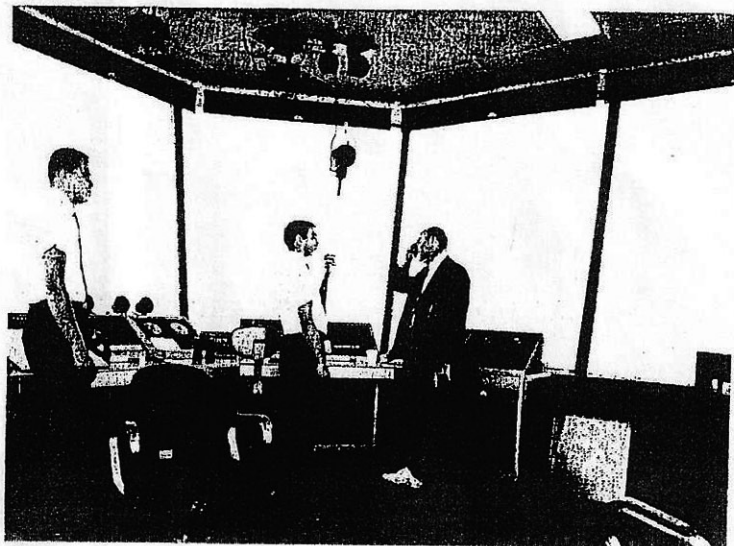
**FEDERAL AVIATION AGENCY  
CONTROL TOWER STAFF:**

(*left to right*)

Donald B. Beeson  
Garvis C. Wooley  
James F. Burkhardt

(*Others not shown*)

Dale W. West  
Harvey W. Young  
Norman C. Miles  
Richard A. Newman



# HISTORY

Gillespie Field was named in honor of Archibald H. Gillespie, Lt., U.S. Marine Corps. He served in the Marine Corps during the War with Mexico from 1846 to 1847. He participated in the Battle of San Pasquale, San Diego County.

Gillespie Field was constructed by the U.S. Government in 1942, during World War II. It was used as a Marine Corps Paratrooper Facility and was leased to the County of San Diego in 1947. It was deeded to the County of San Diego in 1953.

During initial County operation, the major uses were as a base for privately-owned aircraft and as a facility from which flying schools could operate.

Recreation for the area was increased by the County's Parks and Recreation Department operating an Olympic-size swimming pool and gymnasium. Leases to Convair Recreation for operation of skeet, trap, and pistol ranges; Valley Gun Club for rifle range; and Flying Hills for the construction and operation of an eighteen hole golf course added to the recreational facilities provided for the public at Gillespie Field. Seventy acres in the southeast corner of Gillespie Field are leased to Cajon Plaza, Inc. for recreational and commercial development.

By 1955 it became obvious that the airport was rapidly becoming important to the manufacturing industry and other businesses in the area. To meet the demands of increased airport use a temporary manager's and operations' office was established. A Unicom Radio was installed to provide communications.

The number of based aircraft at Gillespie Field has more than doubled from approximately 150 in 1955-56 to 312 aircraft on the most recent count. This is more than twice the number of aircraft based on any other airport in San Diego County. The big increase has been in the number of aircraft purchased for business use. Runway movements have increased until the annual count now exceeds 200,000. The number of based aircraft and the huge number of runway movements establishes Gillespie Field as one of the busiest airports in the West.

To alleviate the present congestion and provide for future traffic demands, the County of San Diego and the Federal Aviation Agency have adopted a Master Plan for the orderly development of Gillespie Field. Under this plan a modern Control Tower was recently completed and is manned by Federal Aviation Agency personnel. The first stage of a lighted taxiway system has also been completed.

Benefits to the taxpayers of San Diego County from the acquisition of Gillespie Field may be summed up as follows:

1. Provision of a first class aviation facility satisfying the needs of the private pilot and bringing industry to the east county area.
2. Diversified forms of recreation and entertainment are available to the public.
3. Approximately 400 persons have steady employment on the airport as a result of leases to firms engaged in various aircraft endeavors, manufacturing, and in the food and recreation business. This amounts to an annual payroll of \$3,000,000. The airport is also an important asset to the adjacent modern industrial park employing several thousand persons.

